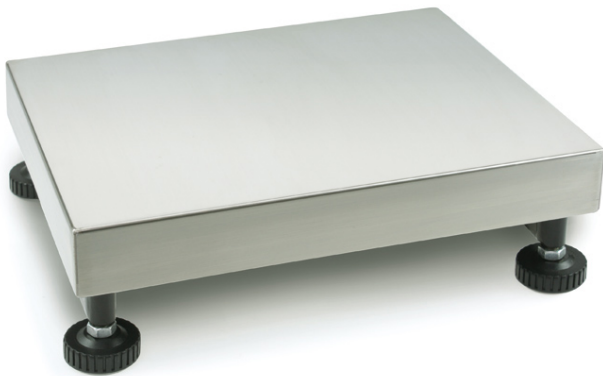


KERN KFP 15V20LM

Platform: weighing plate of stainless steel, painted steel base, silicone-coated aluminium load cell with protection against dust and water splashes IP65



Functions

IP protection - load cell	IP65
---------------------------	------

Packing & Shipping

Readability force [d] (N)	1 d
Dimensions packaging (W×D×H)	795×460×220 mm
Net weight	6,3 kg
Shipping method	Parcel service
Net weight approx.	7 kg
Gross weight approx.	11 kg
Shipping weight	16,1 kg

Services (optional)

Article number for conformity assessment	965-228
Article number for DAkkS calibration	963-128

Pictograms

STANDARD



FACTORY



Category

Brand	KERN
Product category	Component
Product group	Platform
Product family	KFP-V20-IP65

Measuring System

Weighing capacity [Max]	6 kg; 15 kg
Readability [d]	500 mg
Minimum weight [Min]	40 g; 100 g
Loadcell type	aluminium IP65 silicone-coated
Load cell connection	6-wire
Load cell OIML class	C3

Approval

Verification scale interval [e]	2 g; 5 g
Conformity assessment possible ex works	✓

Construction

Dimensions weighing platform (W×D×H)	400×300×117 mm
Material weighing plate	stainless steel
Material platform	steel, powder-coated
Dimensions weighing surface (W×D)	400×300 mm
Cable length	2,5 m
Allowed cable length display device [Max]	3 m
Transport safety lock - bolt torque	0,1 Nm
Material load cell(s)	aluminium
Load cells - number	1
Levelling feet adjustable	✓